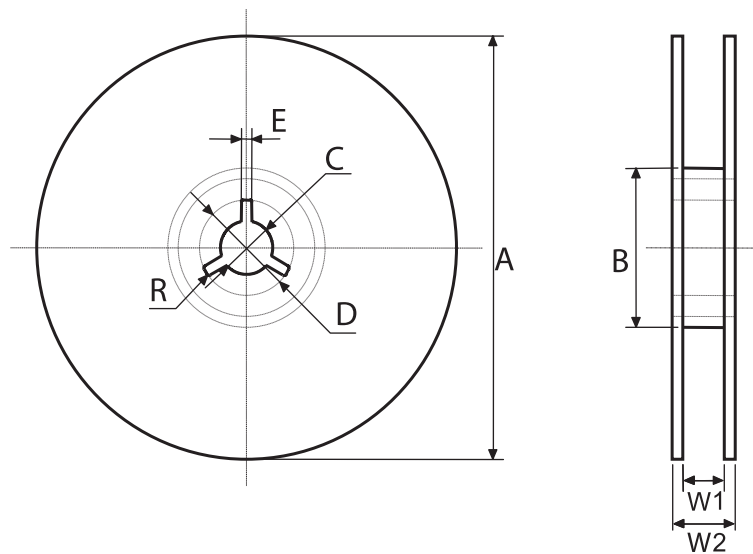


FPCAP Packing Unit Quantity for Reel (SMD Type)*RPS, RPA, RHS, RHA, RSS, RSA, RSB, RFS, RFA, RSL, RDS, RKS***Components are packaged as per following packing unit.**

● Packing Quantity (Reel)

Case Size $\phi D \times L$ (mm)	Packing Unit (pcs)
$\phi 4 \times 5.2$	2,000
$\phi 5 \times 5.7$	1,000
$\phi 6.3 \times 4.2$	1,000
$\phi 6.3 \times 5.7$	1,000
$\phi 6.3 \times 5.8$	1,000
$\phi 6.3 \times 7.7$	900
$\phi 8 \times 6.7$	1,000
$\phi 8 \times 7.7$	900
$\phi 8 \times 8.7$	500
$\phi 8 \times 10$	500
$\phi 8 \times 11.7$	500
$\phi 10 \times 7.7$	500
$\phi 10 \times 10$	500
$\phi 10 \times 12.4$	400

Note : Please inquire for FPCAP by Packing Unit as above.



[Unit : mm]

Size (dia)	A ± 2.0	B ± 1.0	C ± 0.5	D ± 1.0	E ± 0.5	W1 ± 1.0	W2 ± 1.0	R
$\phi 4, \phi 5$	380	80	13.0	21	2.0	13.4	17.4	1.0
$\phi 6.3$	380	80	13.0	21	2.0	17.4	21.4	1.0
$\phi 8, \phi 10$	380	80	13.0	21	2.0	25.4	29.4	1.0